

## DIRECTIONS TO BRONX RIVER ALLIANCE OFFICE AT RANAQUA (ONE BRONX RIVER PARKWAY)



**By subway** - take the #2 to Bronx Park East. Take the stairs down to street level, and walk back (towards Manhattan) under the elevated train. This will set you walking along the sidewalk to the Parks building. You will see green trucks ahead and a number of "authorized vehicles only" signs. Continue along the sidewalk to the right. Enter the front of the building which faces the Bronx River Parkway and ask the receptionist for directions to the conference room or Bronx River Alliance, as appropriate.

### **By car:**

#### *From the South*

Take the Bronx River Parkway to the Ranaqua exit (an unmarked exit just before exit #6 for the Bronx Zoo) - look for the sign on the right side of the road that reads "Official Vehicles Only". Take this exit. (If you miss this exit, take the next exit and follow the directions below after exiting the Bronx River Parkway.) Park in front of the building or in parking lot just past the building. Enter the building and ask the receptionist for directions to the conference room or Bronx River Alliance, as appropriate.

#### *From the North*

Exit #6 "North 1 Boston Road Bronx Zoo".

Right at the Sign

Right at light - Bronx Park East

Go through 2 lights

At the fork go straight

At the yield sign go straight

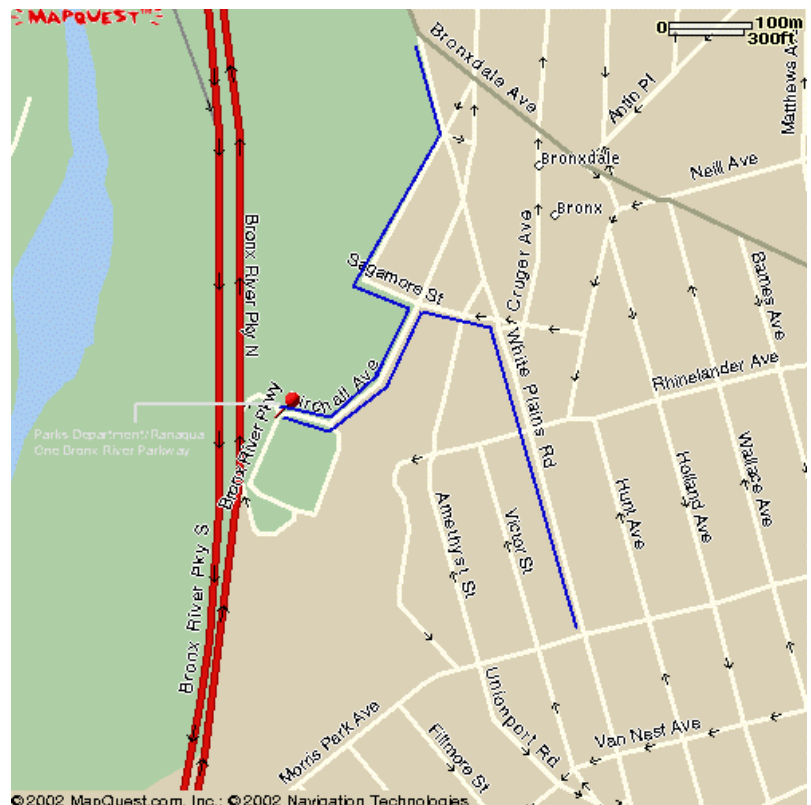
Stay in the right lane and make a right onto Birchall Avenue

At stop sign at Birchall and Sagamore go straight

Park in parking lot on right - parking lot #2.

Continue around road to front of building which faces the Bronx River Parkway.

Continue to the reception area and ask the receptionist for directions to the conference room or Bronx River Alliance.



**Bronx River Alliance phone:** 718 430-4665