

# APPENDIX G

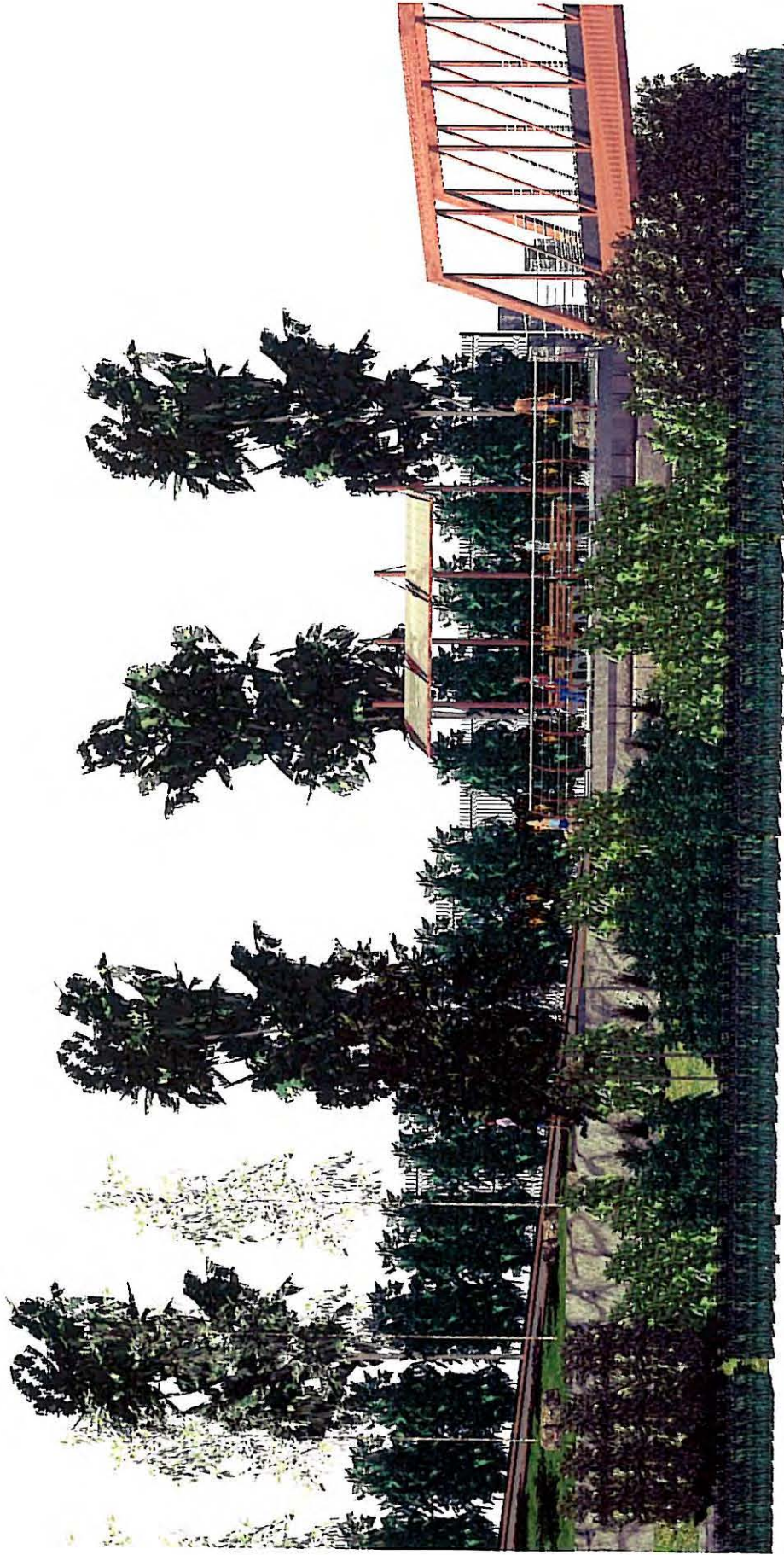
## Visualizations



Plan View of Overlook at Bridge 1



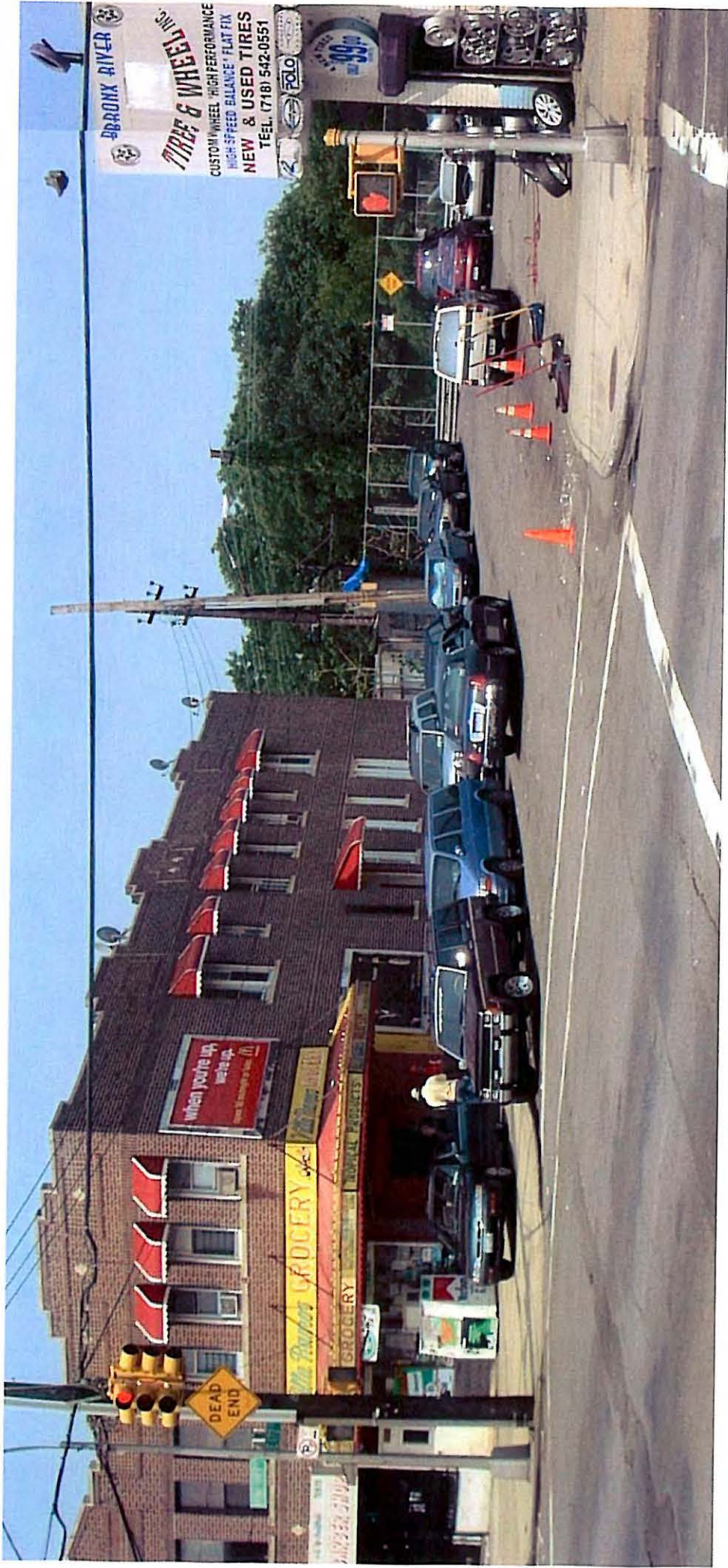
Looking West at the overlook at the Southern end of Bridge 1



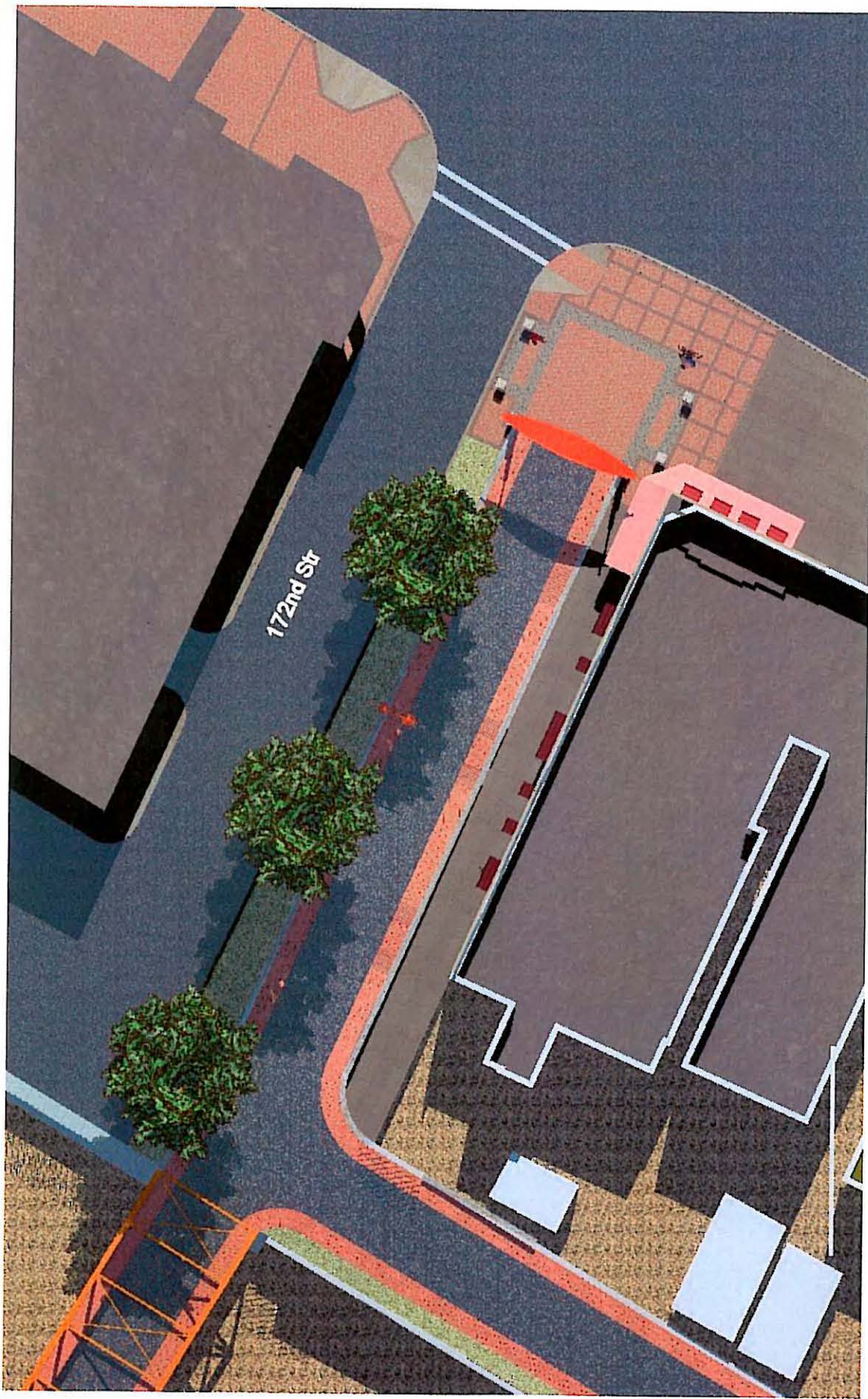
Overlook at Bridge 1 Looking Northwest



EXISTING 172<sup>nd</sup> STREET ENTRANCE, FACING WEST



EXISTING 172<sup>nd</sup> STREET ENTRANCE, FACING SOUTHWEST



Plan view of East 172<sup>nd</sup> Street

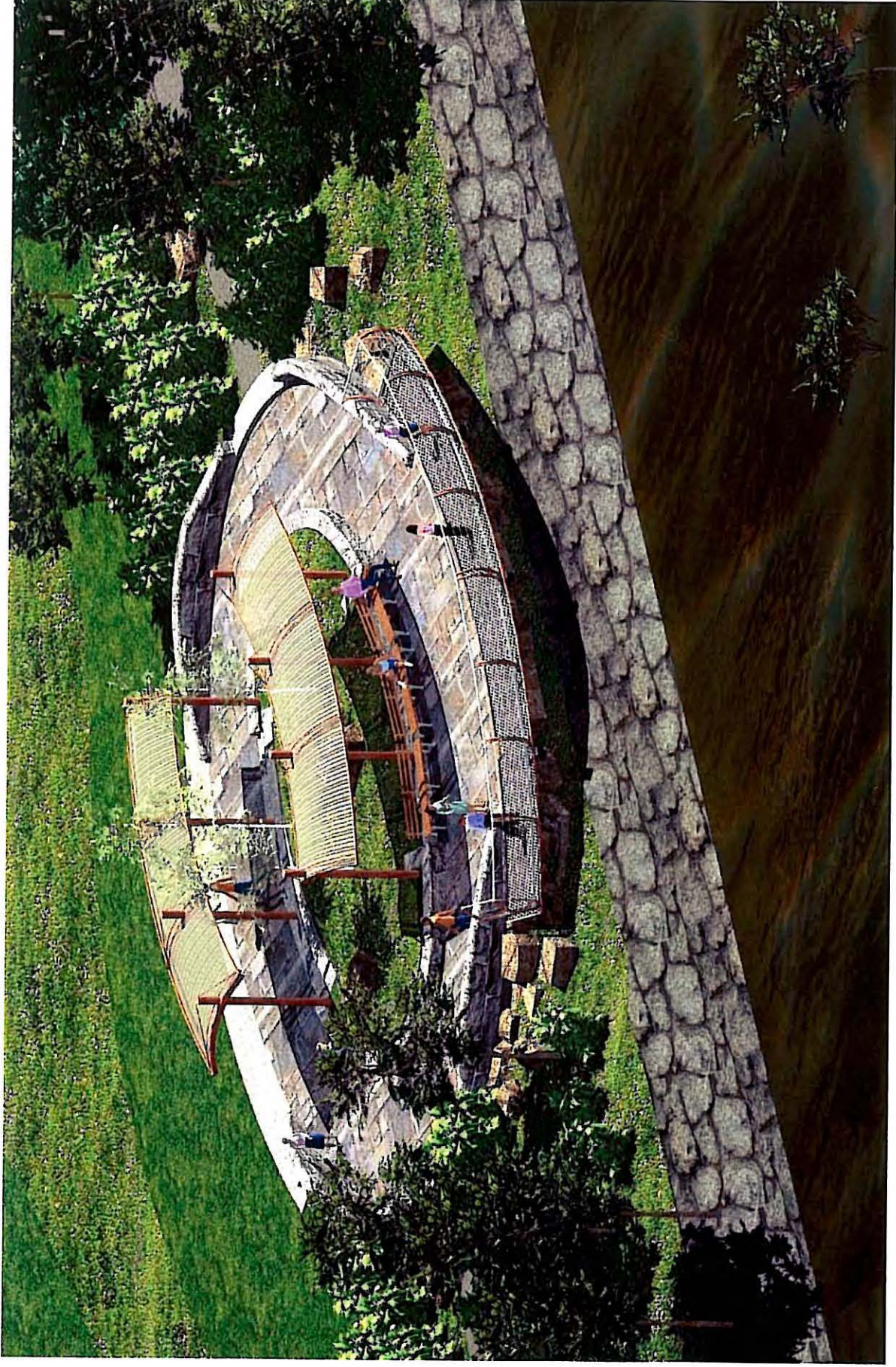


PROPOSED 172<sup>ND</sup> STREET ENTRANCE, FACING WEST

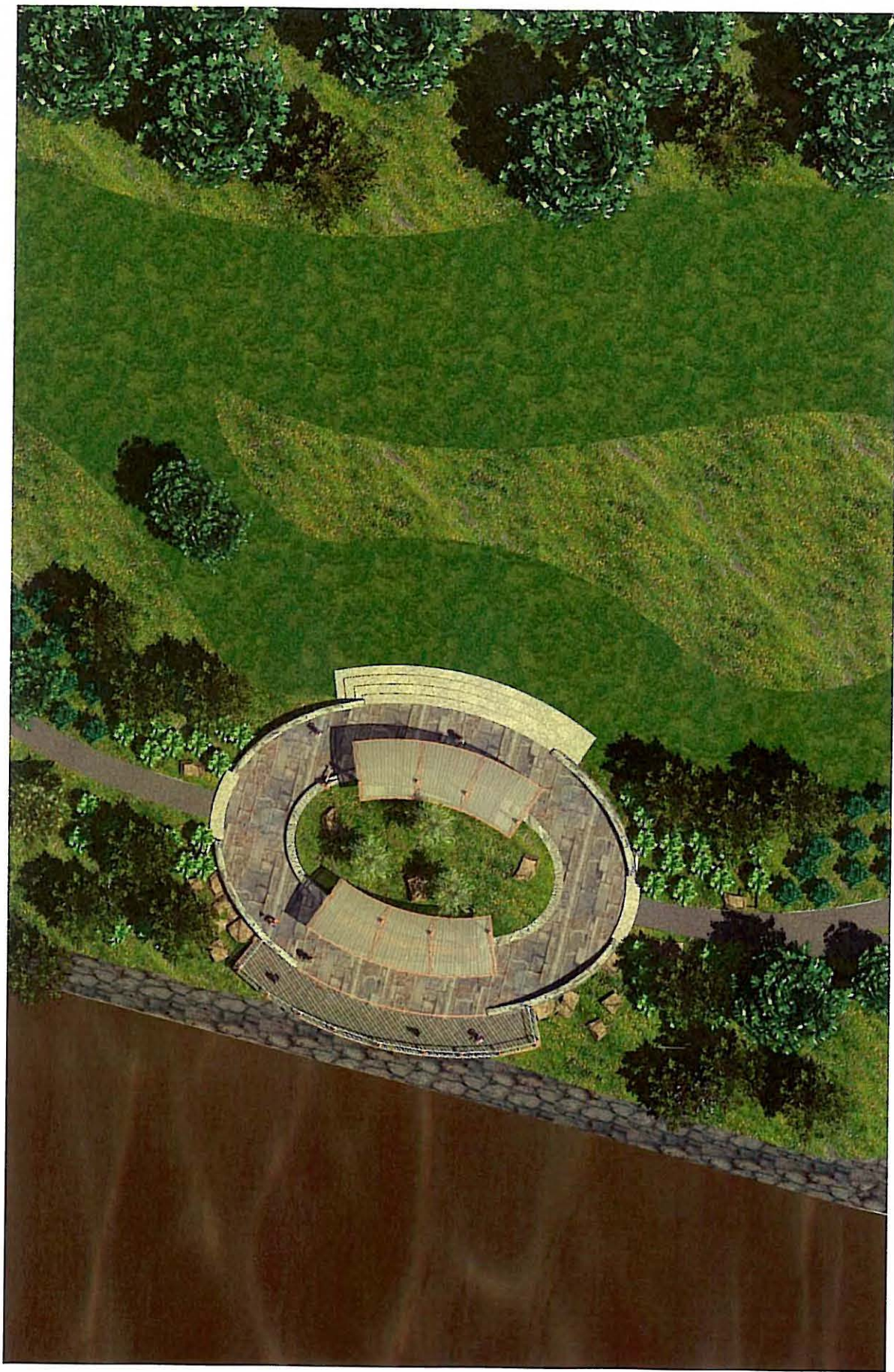




PROPOSED 172<sup>nd</sup> STREET ENTRANCE, FACING SOUTHWEST



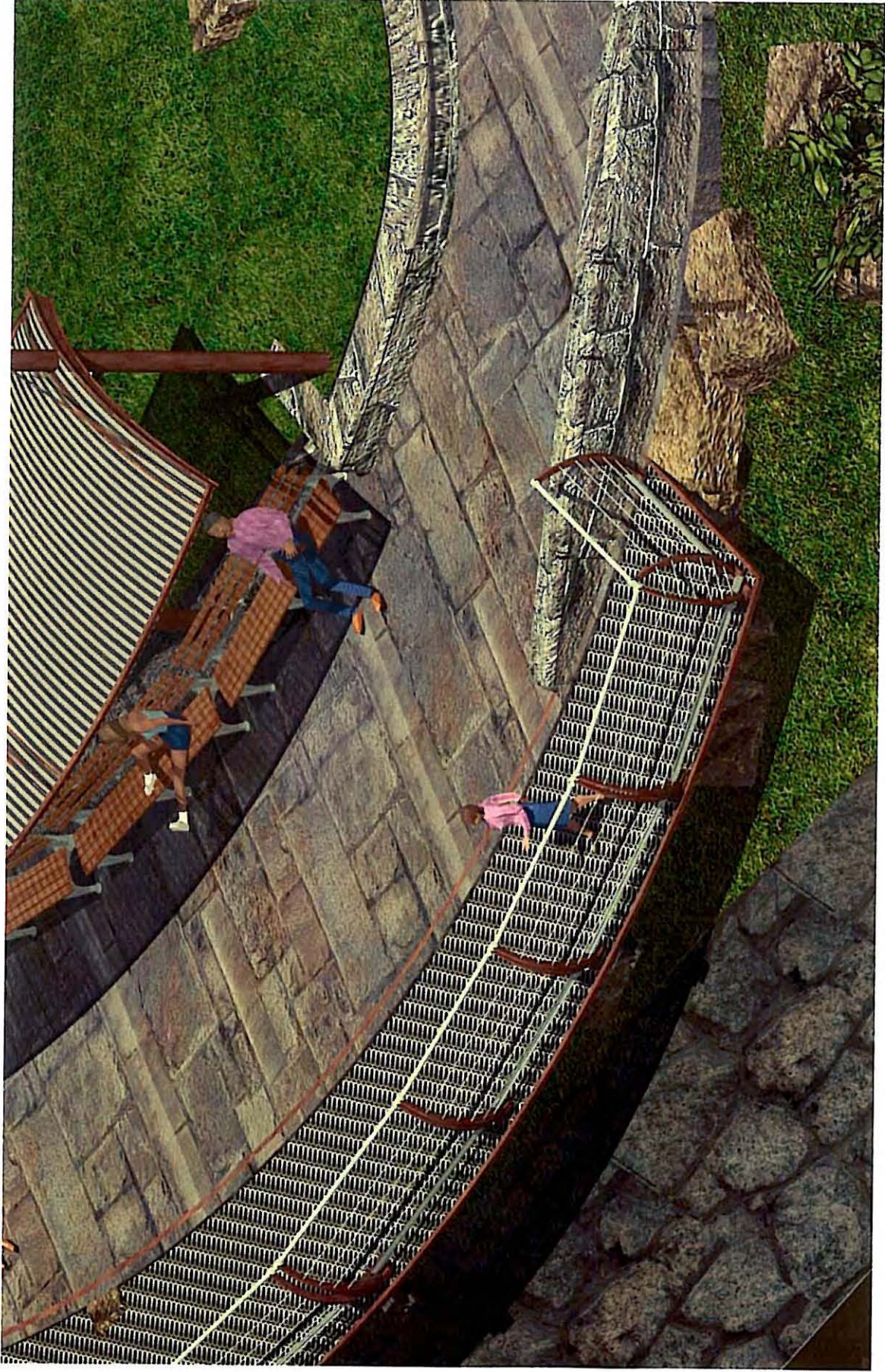
Looking South at 174<sup>th</sup> Street overlook



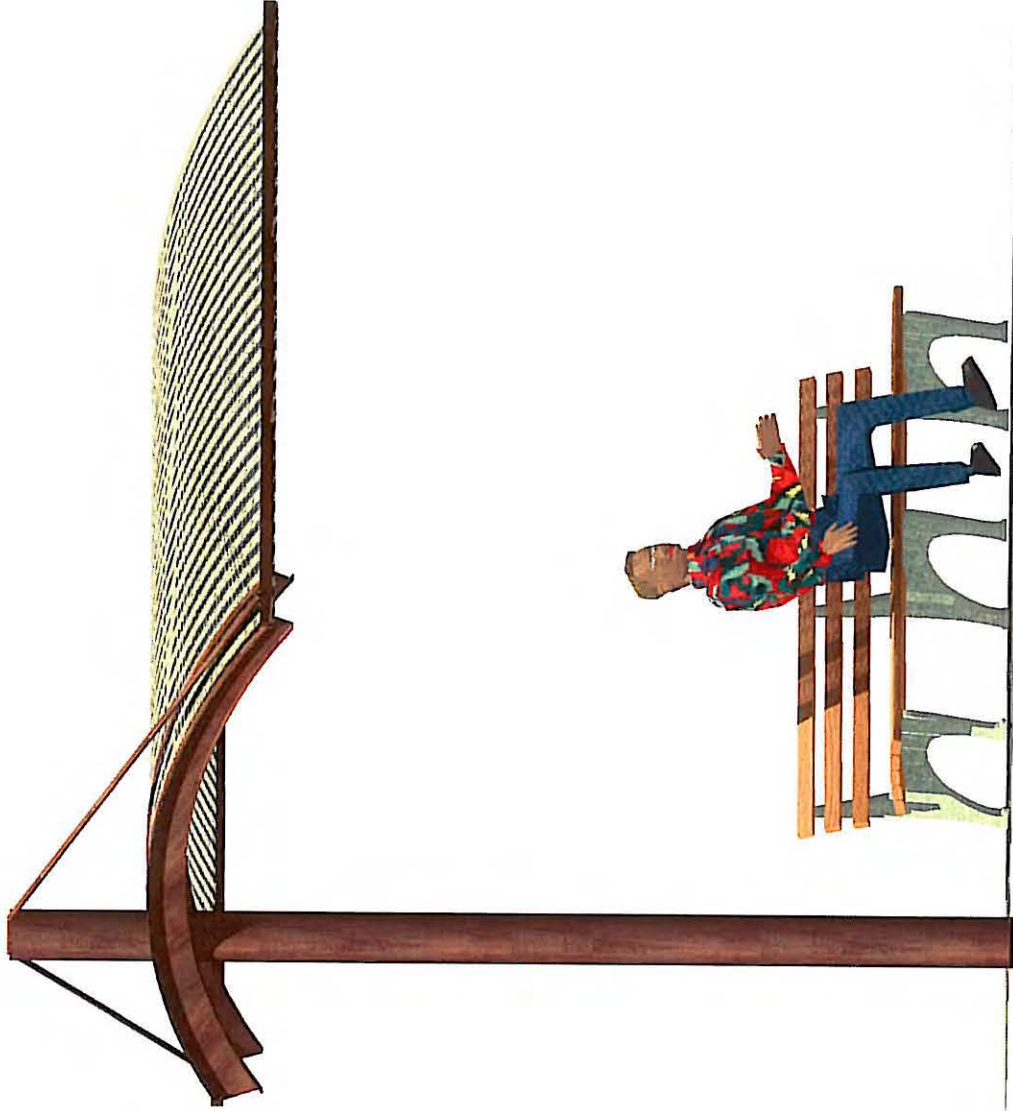
Plan View of overlook at 174<sup>th</sup> Street



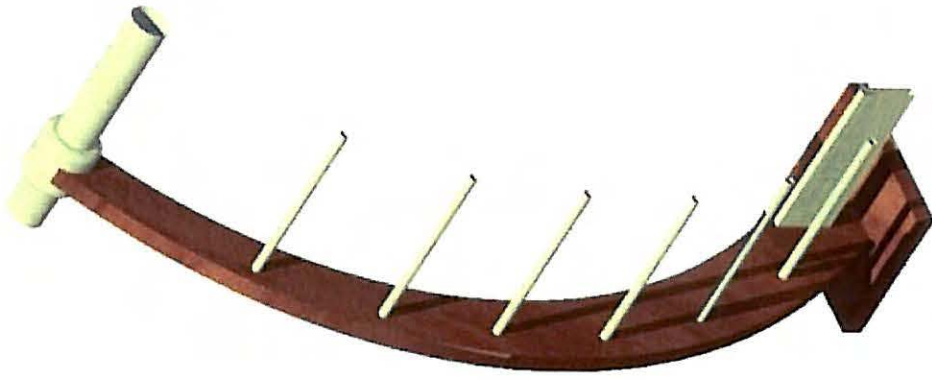
Scenic overlook at 174<sup>th</sup> Street looking West



Close up look at scenic overlook at 174<sup>th</sup> Street



Detail of canopy at overlooks



Rail Detail



Scenic overlook in the switchback of the path, looking North

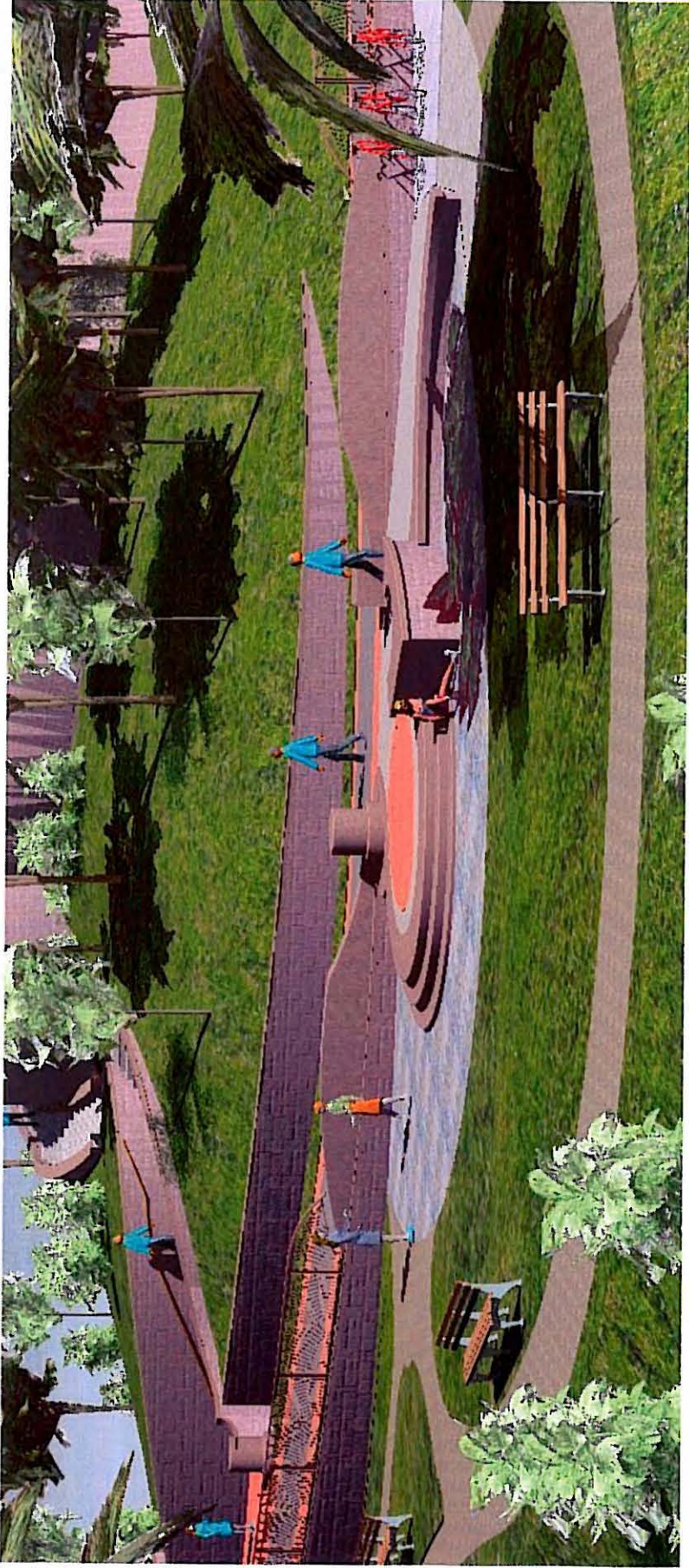




Plan View of Switchback Overlook



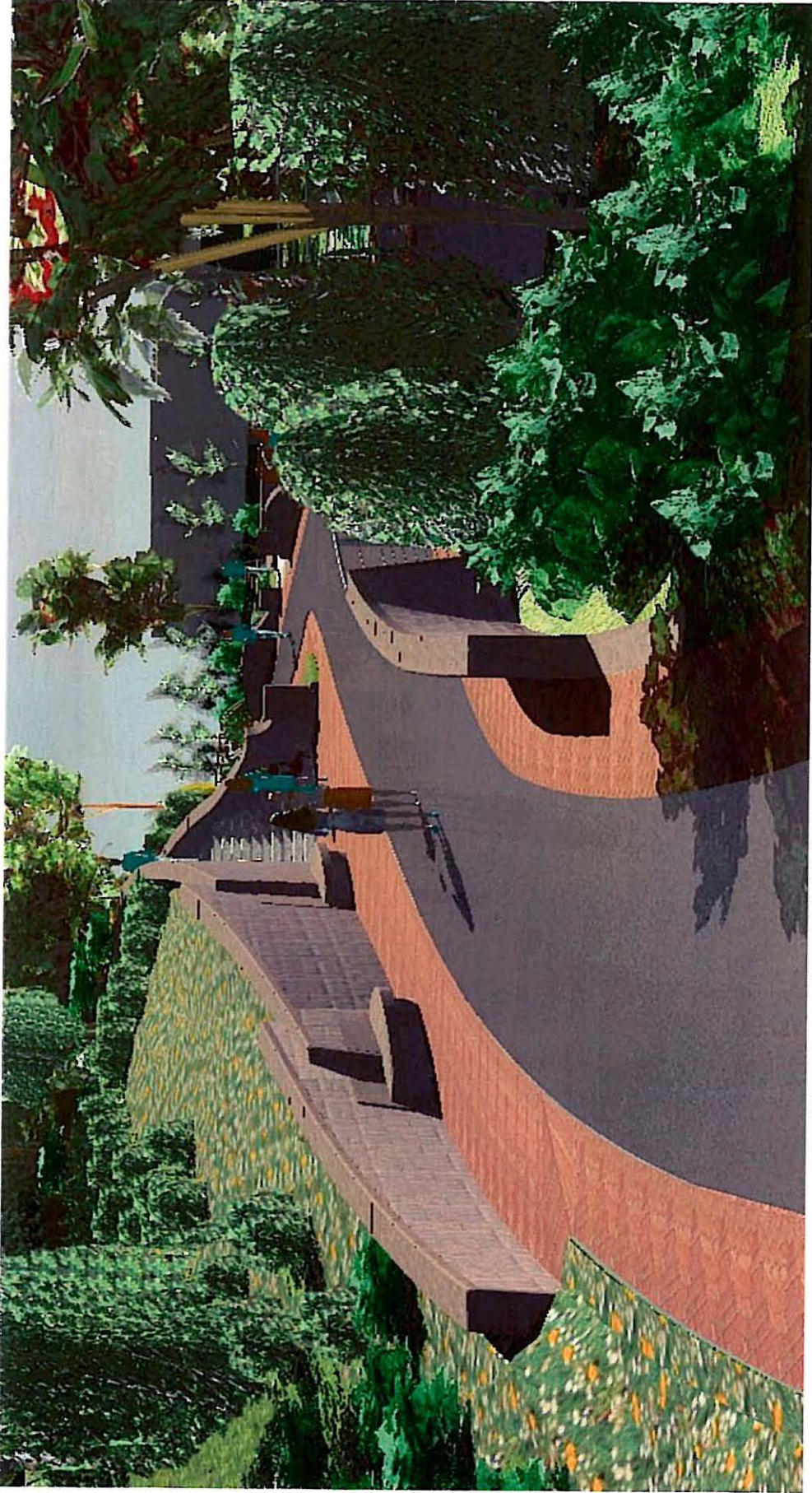
Plan View of area between Bridge 2 & Bridge 3



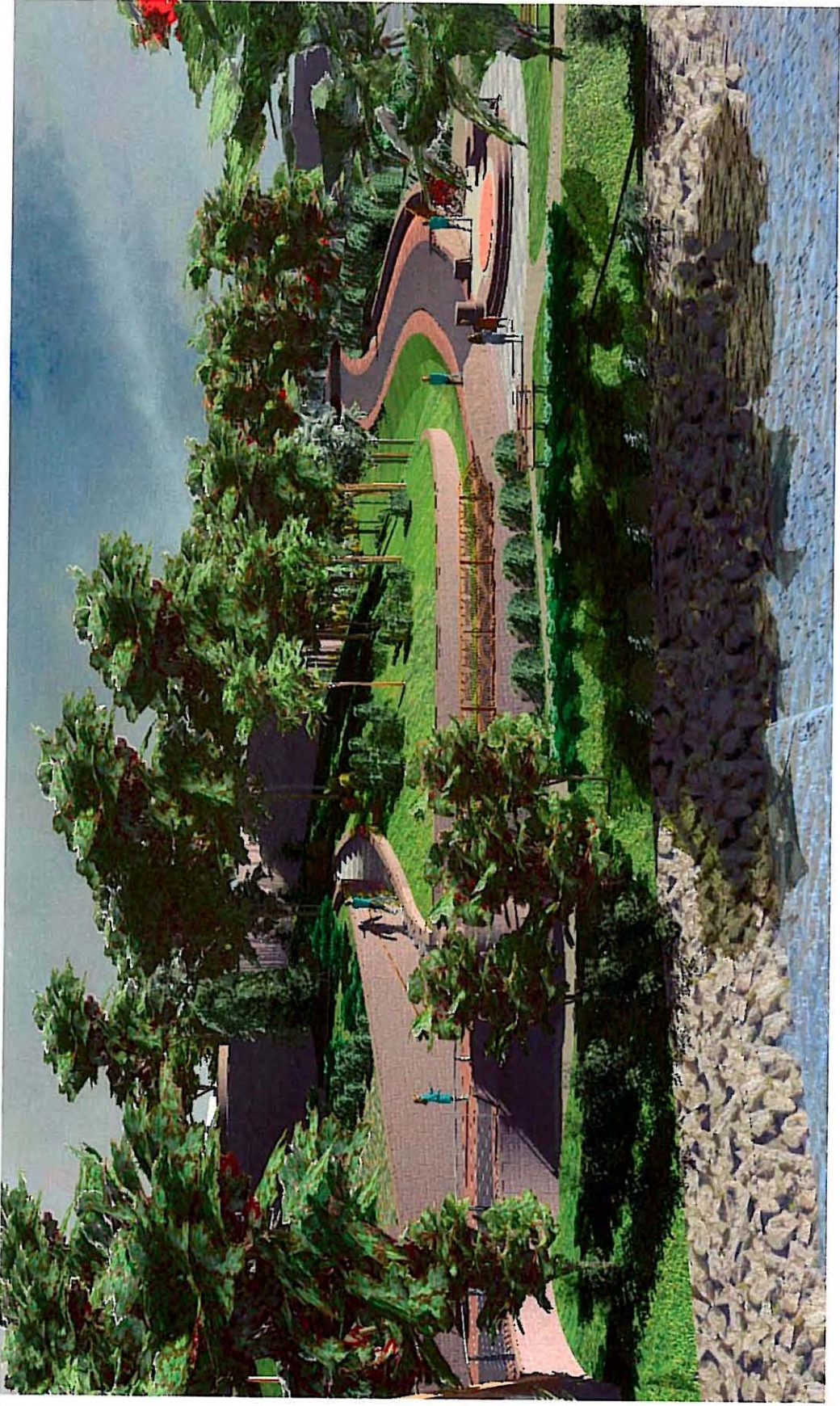
Sitting area just South of Bridge #3 looking East



Proposed Sitting Area



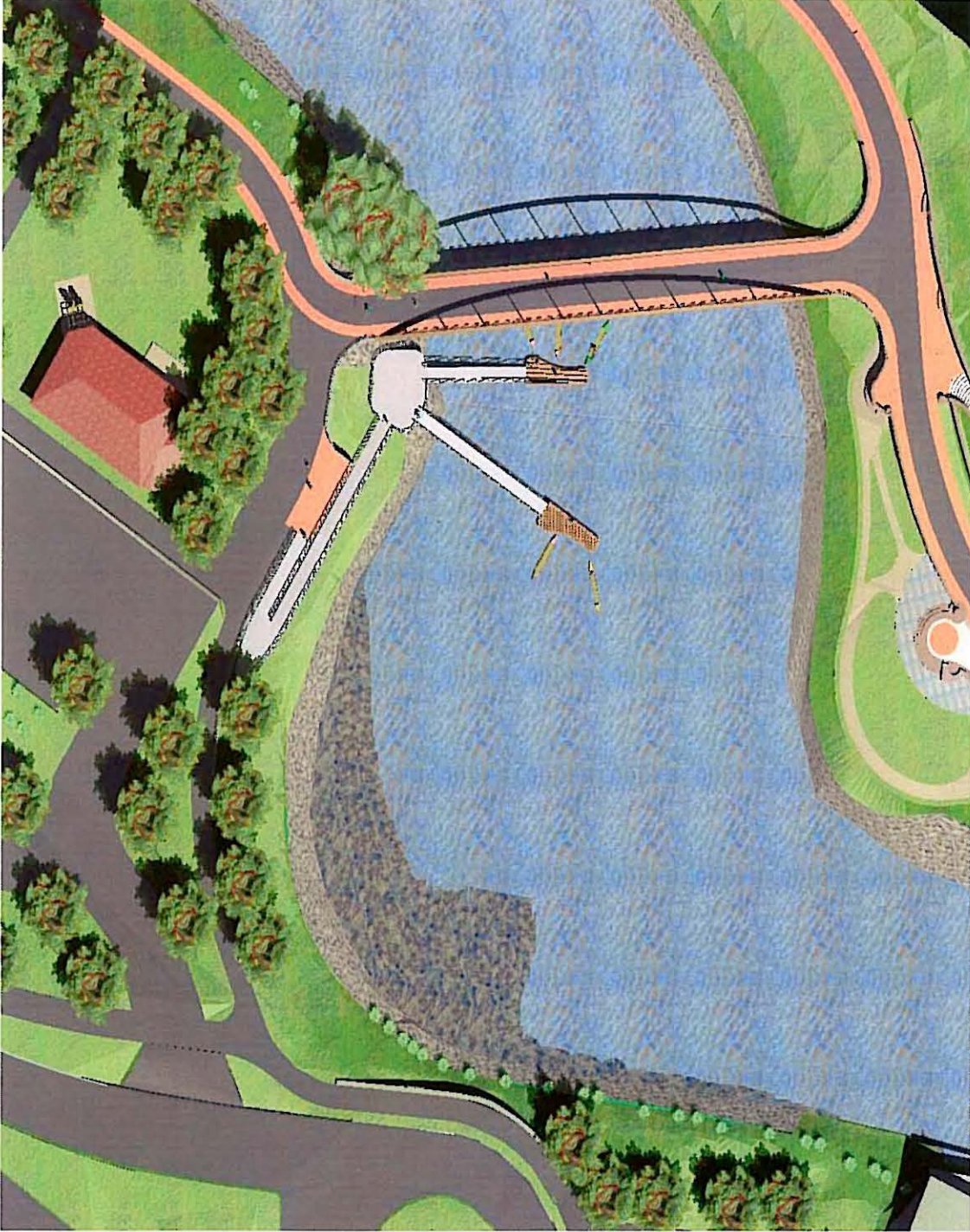
Proposed walkway and retaining walls



Looking South at area West of Bridge 3

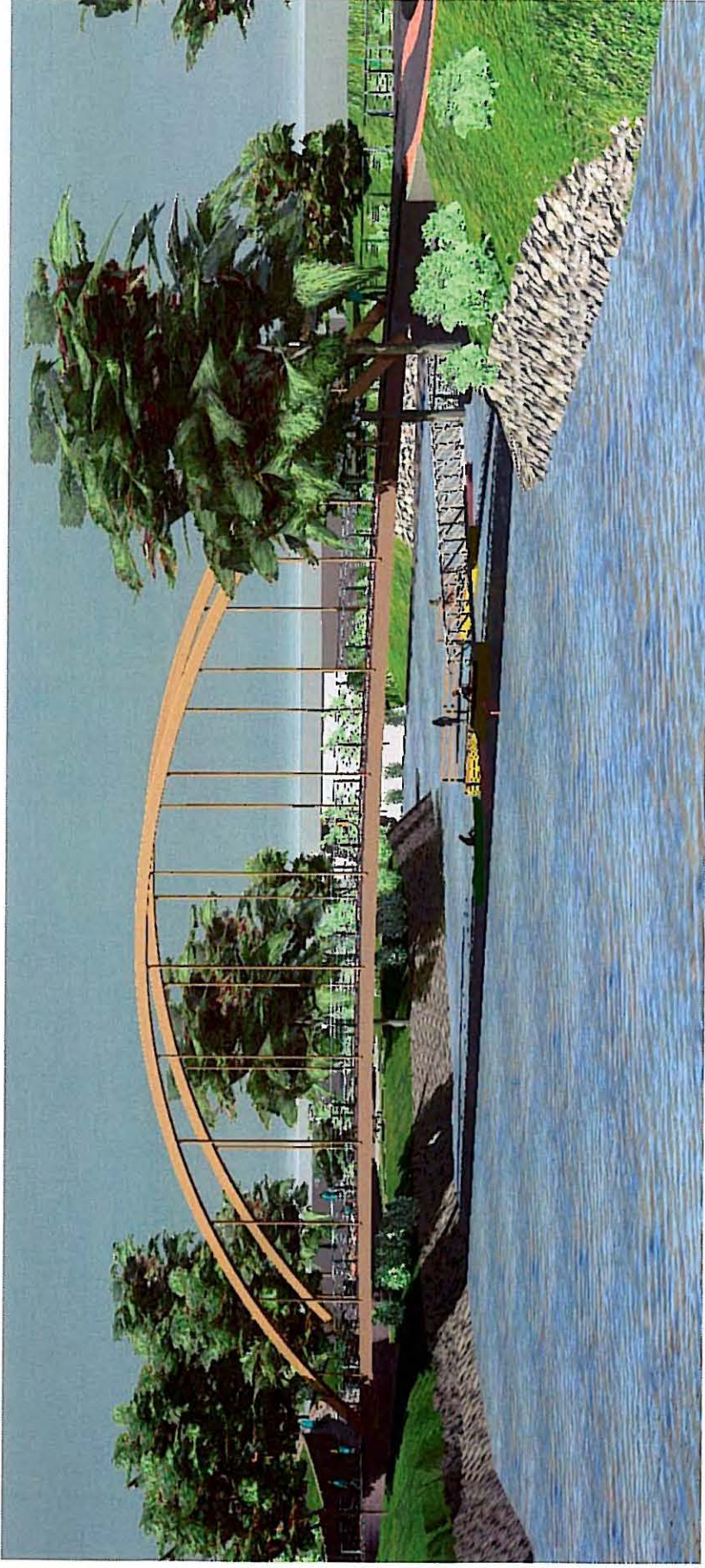


Floating dock looking Northwest

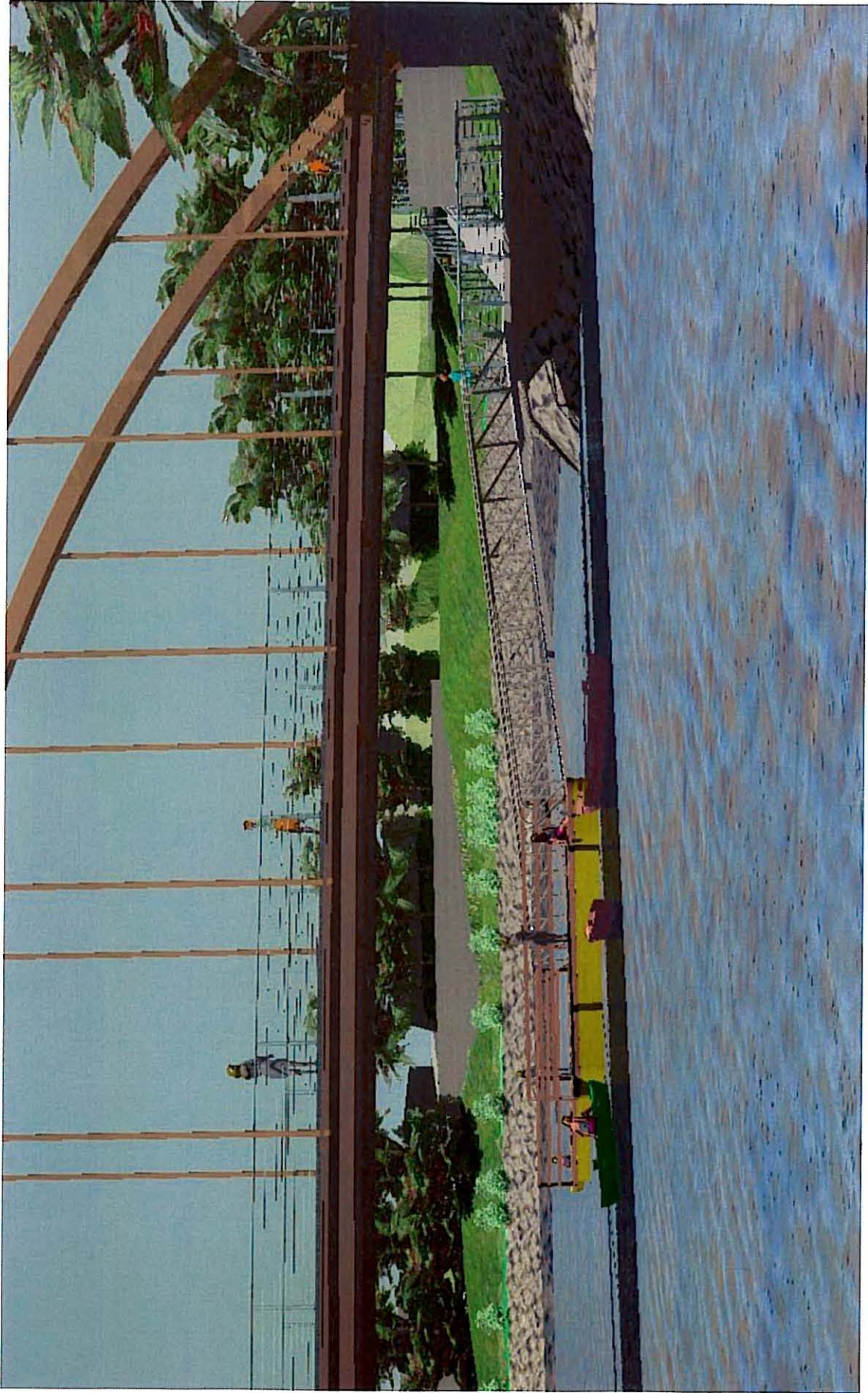


Plan view of floating dock

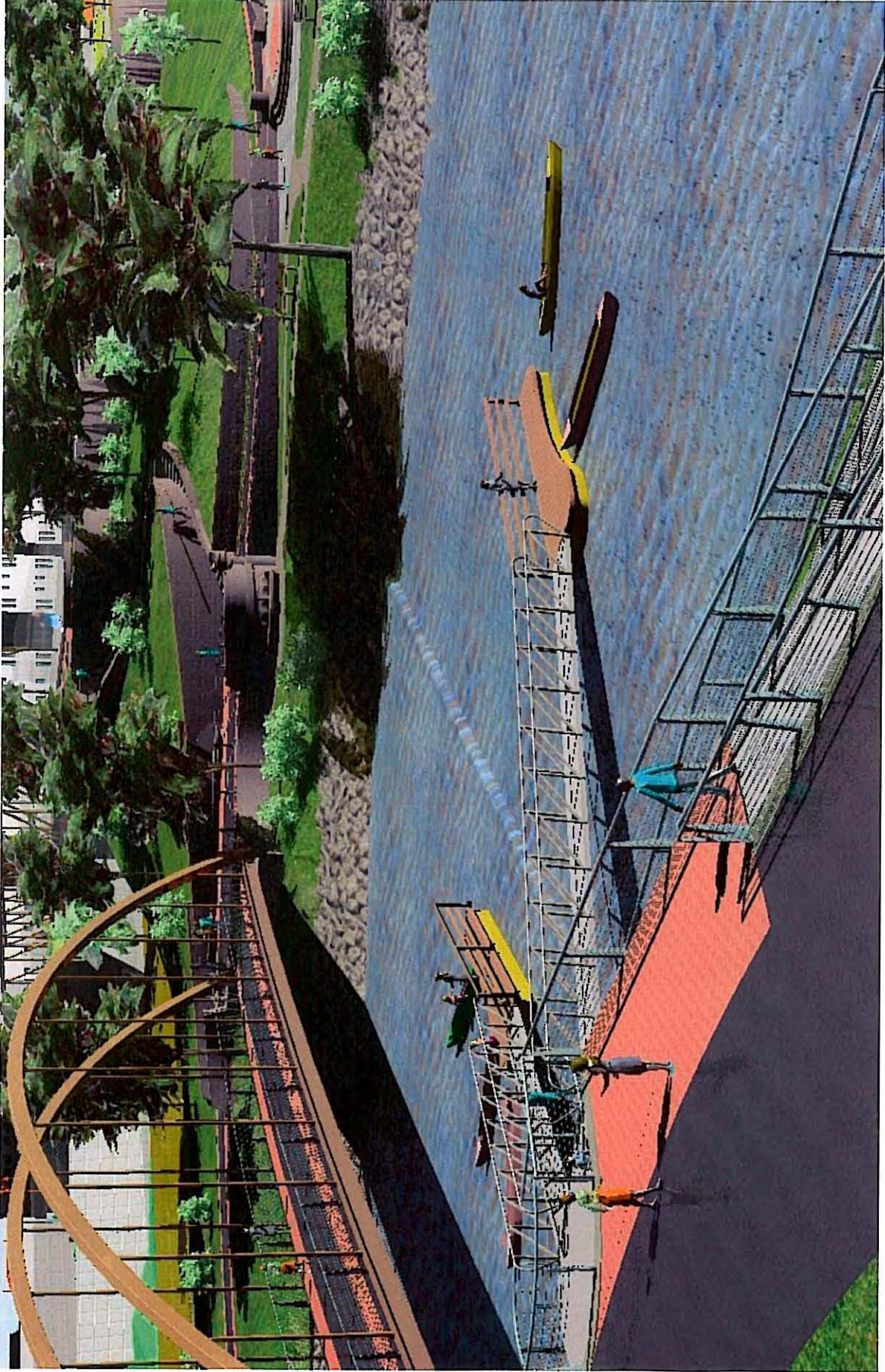




Floating dock looking West



Floating Dock Looking West



Floating dock looking Southeast



Floating dock looking Northwest