



bronx river alliance

2015 Highlights

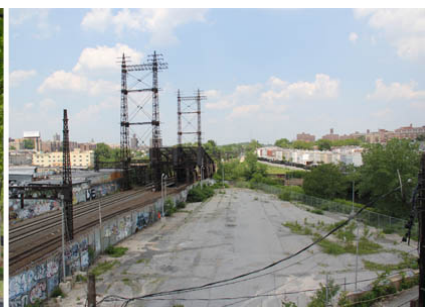


Access for Eels and Alewife

For the first time since the 1600s, American eel and alewife herring are able to bypass the river's lowermost dam to access critical freshwater habitat. The Alliance and NYC Parks completed separate structures for the two species and monitored them for returning fish.

Closing a Major Gap in the Greenway

Years of hard work and community support paid off this year—we raised nearly \$20 million that will go to NYC Parks for the Bronx River Greenway! A \$10M grant from US DOT's highly competitive TIGER grant program matches allocations from New York State DOT, Bronx Borough President Ruben Diaz, Jr. and State Senator Ruben Diaz, Sr. With this funding in place, we will bridge a critical gap in the Greenway, connecting Concrete Plant and Starlight Parks via new parkland, trails, two pedestrian bridges, and restored shorelines.



Watch those Bioswales!

Grasses and flowers in bioswales came to life this spring, as did the interest of Soundview youth. Arena High School students participated in our Bioswale Watch program, monitoring street-side rain gardens and reporting problems to the NYC Department of Environmental Protection. The Alliance developed Bioswale Watch in collaboration with Columbia University researchers who are studying how bioswales function from microbes to climate impacts and exploring ways to promote local stewardship.



Trees in the Classroom ... and along the River!

Hundreds of students from Bronx Community Charter School and Shomburg Satellite Academy adopted seedlings in their classroom and explored and studied riverine forests along the Bronx River. In the autumn, the students planted their trees, which joined over 1,000 trees and 5,000 shrubs and other herbaceous plants planted along the river this year by the Conservation Crew.

What's that in the water?



This summer, the Alliance led a water quality monitoring program focused on the river's most significant pollutant river: fecal bacteria. With funding from EPA and support from Rocking the Boat, we collected and analyzed 65 samples from the Westchester County line to the mouth of the river. The results have been uploaded to www.bronxriverwater.org, where they can be compared to previous year's data.

