
RECONSTRUCTION OF EAST 177TH STREET / DEVOE AVENUE

PROJECT ID: HWXP2007
BRONX RIVER ALLIANCE
BOROUGH OF THE BRONX

CONTENTS

BACKGROUND

PROPOSED IMPROVEMENTS

CHALLENGES

SCHEDULE

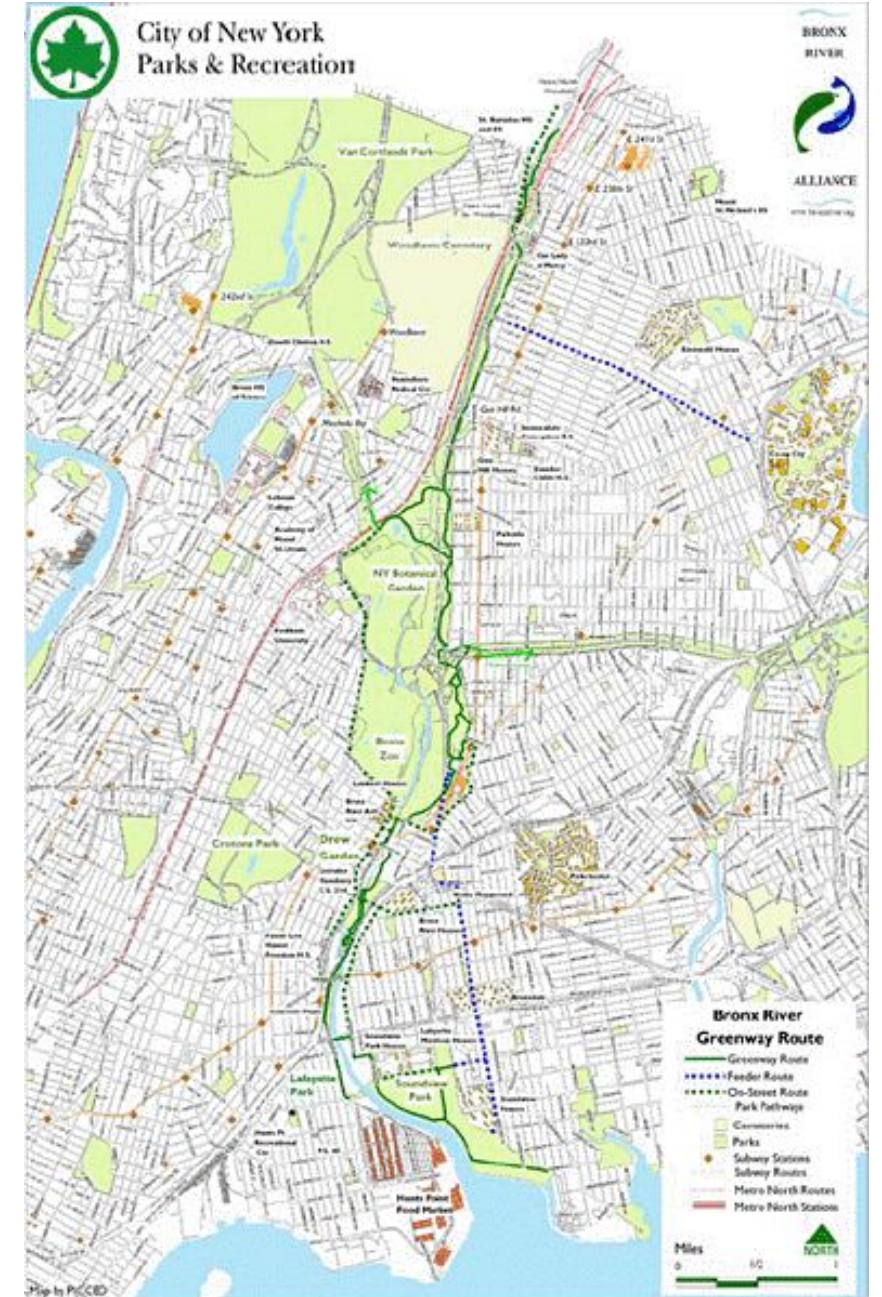
COMMUNITY OUTREACH



BACKGROUND

Bronx River Alliance - Greenway Master Plan

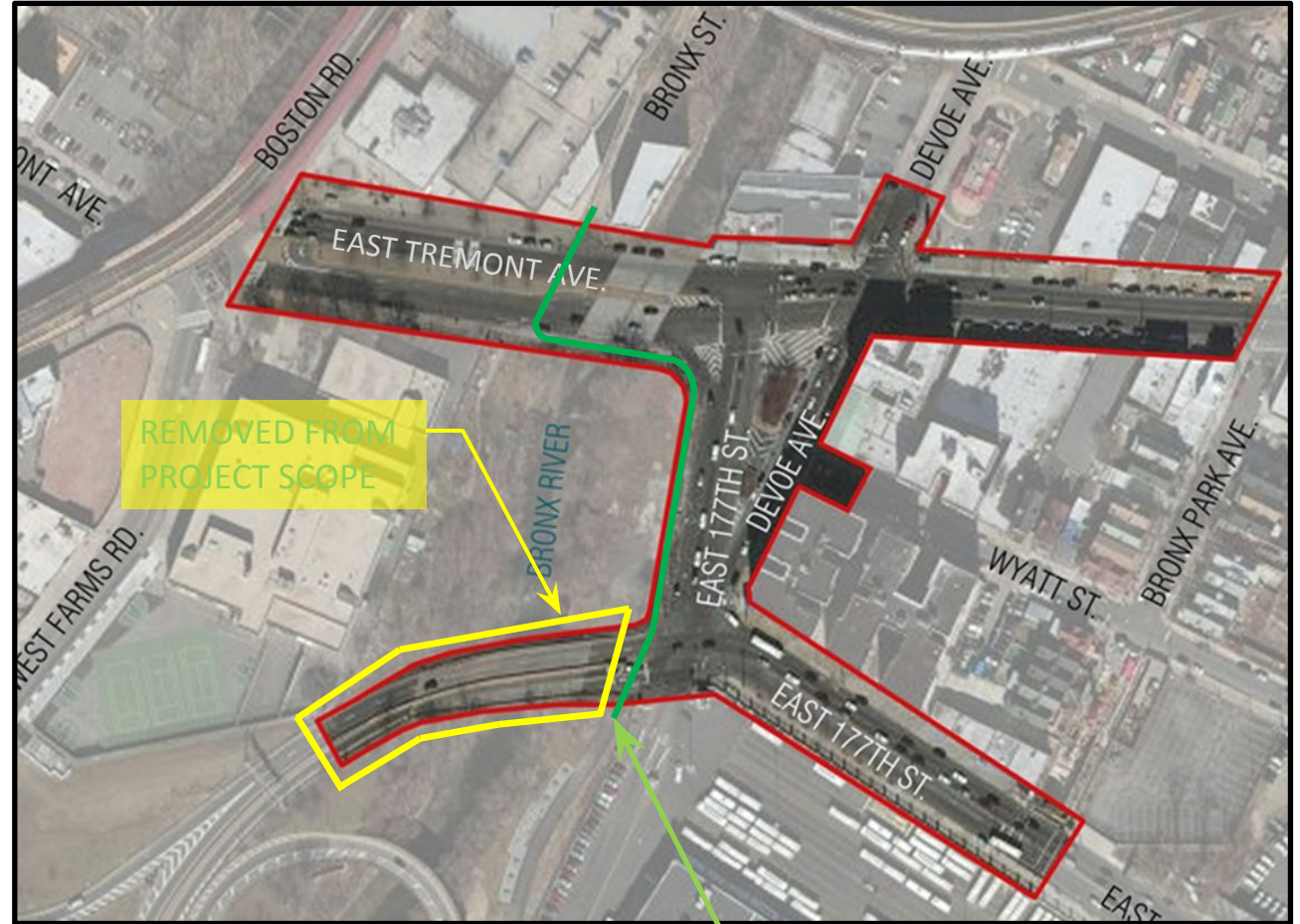
- 23 mile Trail (8 miles in the Bronx from mouth at East River to border of Westchester County)
- From mouth at East River to border of Westchester County and divided into 5 Segments
- Segment A – East River to Bruckner Boulevard
- Segment B – Bruckner Boulevard to East Tremont Avenue
- Segment C – East Tremont Avenue to Pelham Parkway
- Segment D – Pelham Parkway to East 211th Street
- Segment E – East 211th Street to the City Line



BACKGROUND

Greenway Connection

- This project connects Segment B and Segment C
- Segment B – Bruckner Boulevard to East Tremont Avenue *includes Starlight Park*
- Segment C – East Tremont Avenue to Pelham Park

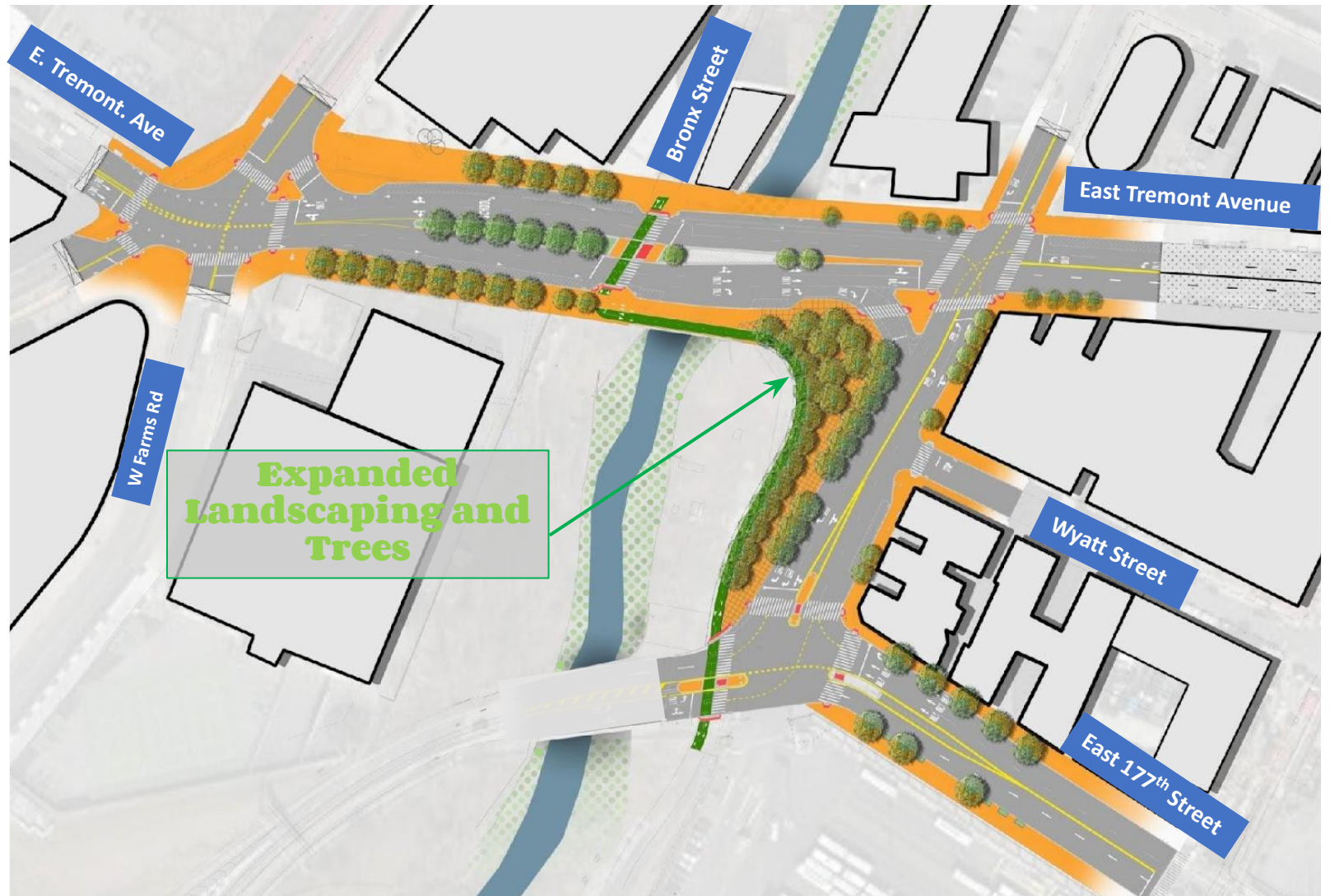


— Proposed Bronx River Greenway Connection

ENTRANCE TO
STARLIGHT PARK

PROPOSED IMPROVEMENTS

- Organized Pedestrian / Vehicle Movements
- Shorter pedestrian crossings with refuge medians, sidewalk bump-outs, and new curbs and sidewalks throughout
- Bronx River Greenway Connection complete between Starlight Park and Bronx River Park
- Upgrade infrastructure - street lighting, signals, water main, sewers, signage
- Expanded landscaping, new trees



CHALLENGES

Design Challenges

NYSDOT

- Currently reconstructing portions of Sheridan Expressway as part of the Hunts Point Project
- Planned reconstruction of portions of the Cross Bronx Expressway (Construction expected Summer 2026)

NYCDEP

- Multiple design changes mid-project for water main and sewer upgrades
- **DEP Unified Stormwater Rule** triggered design and implementation of Post-Construction Stormwater Mitigation Practices and development of *SWPPP Report*

Private utility coordination

- (Con Edison, ECS, AT&T, Cablevision) – Required redesigns per DEP scope change

NYCDOT

- Signals (Traffic Study and Design of Timing), Street Lighting (Existing Low Light Conditions), OCMC (High Volume Intersections for vehicles and peds)

COVID-19 – Design paused for COVID-19 pandemic from March 2020 to July 2021.



CHALLENGES

DEP Unified Stormwater Rule (USWR)

DEP USWR started February 2022 -- the E 177th St and Devoe Ave project triggers the rule because it disturbs more than one acre of soil

DEP USWR requires Post Construction Stormwater Mitigation Practices, a Stormwater Pollution Prevention Plan (SWPPP) and Erosion and Sediment Control (E&SC) Plan

(March 2022 – January 2023)

- Contract negotiation and registration for additional design services
- Contract registered January 2023; PCSMP Design, E&SC Design and SWPPP Report begun

Design Progress since January 2023:

- Mass Mailing 1.0 to Agencies and Private Utilities - April 2023
- Alignment Meeting - May 2023
- PCSMP Design, E&SC Design and SWPPP Report submitted to DEP - August 2023
- DEP comments - September 2023

CHALLENGES

Updates

DEP Unified Stormwater Rule (USWR) – Design Approach

Project area is zoned as a **Manufacturing District**

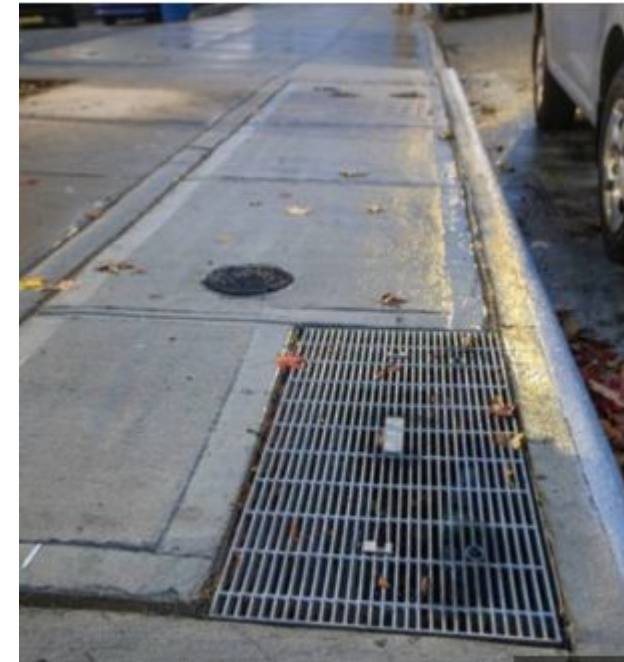
Design Approach (per DEP requirements for Manufacturing Districts): Concrete Top and Grass Top Infiltration Basins

Geotechnical (Soil) Information:

- Initial information and report provided - October 2022
- Additional Geotechnical Information - expected November 2023

Stormwater Pollution Prevention Plan (SWPPP) submitted to DEP August 2023

- Infiltration Basin siting will be finalized (pending final Geotechnical Results)
- SWPPP to be resubmitted - November 2023



SCHEDULE

- October 2023 – 75% Design Plans Complete
- December 2023 – 100% Design Plans Approval
- January 2024 – Advertise Bid
- February 2024 – Bid Opening
- May 2024 – Award Contract
- Fall 2024 – Start Construction



COMMUNITY OUTREACH

- **DDC's Office of Community Outreach + Notification (OCON)** works with CB's, BID's, local businesses, and other community stakeholders impacted by construction.
- DDC will assign a dedicated on-site Community Construction Liaison (CCL). The CCL information will be provided at the pre-Construction phase:

Email:

Phone:

Field Office Location:

Field Office Hours: 7AM to 3:30PM

COMMUNITY OUTREACH (continued)

Community Construction Liaison (CCL) responsibilities are as follows:

- First point of contact, maintain on-site presence and communications
- Identify, resolve and/or proactively address issues and inquiries
- Distribute advisories and weekly construction activities newsletter
- Provide 72-hour and 24-hour (confirmation or cancellation) advisories for work impacts by email and door to door
- Attend community board monthly DSC meetings

How we communicate with you

Besides having an on site CCL, we also have printed materials that are updated continuously, including:


NYC
DDC

PROJECT
INFORMATION CARD

NYC
DDC

Department of
Design and
Construction

Office of Community Outreach and Notification
Project Information Card
Queens



Sewer Upgrades on
42nd Avenue Between
204th Street and
Clearview Expressway

Project Contact
Community Construction Liaison
Lee J. Jarama
718-225-7007
ljarama@nyc.gov

Field Office Address
49-08 204th Street
Queens, NY 11368
During non-working hours
please call 311 and provide
the Project ID: SE-02003569

Infant/Scope
We are upgrading infrastructure
to ensure the delivery of
necessary services.

Schedule
Spring 2018 - Summer 2019

Work Hours
Typical work hours will be
Monday-Friday 7AM to 4PM

Construction Cost
\$2,870,546.79

General Contractor
Maspegh Supply Co., LLC
R.E.J. Firm
St. Engineering, P.C.

Management Agency
NYC Department of Design and
Construction

Sponsor Agency
NYC Department of
Environmental Protection

Project Information
The purpose of the project is to
mitigate flooding by installing new
storm sewers and catch basins.
Our work also includes the
replacement of sanitary sewers.
The project's designated work area
is on 204th Street Between the
Deed End and 42nd Avenue, and
42nd Avenue Between 204th Street
and Clearview Expressway.

LOOK AHEAD
WEEKLY BULLETIN

NYC
DDC

Department of
Design and
Construction

Office of Community Outreach & Notification

WEEKLY CONSTRUCTION BULLETIN

08/06/18 - 08/10/18

Distribution Water Main Extension and Replacement PROJECT #: MED625 BOROUGH: MANHATTAN DATE ISSUED: 08/03/18

The following is an anticipated work schedule for the upcoming week. However, due to unforeseen field and weather conditions, it may become necessary to change some scheduled work locations, operations and dates.

DATE	WORK HOURS	LOCATION	OPERATION
08/06/18 - 08/07/18	7:00 am - 4:00 pm	East Side of Bowery Between Grand Street and Broome Street	Excavation for the purpose of water main replacement.
08/07/18	7:00 am - 4:00 pm	South Side of West 14th Street Between 10th Ave and Washington Street	MPT Setup.
08/08/18	8:00 am - 4:00 pm	East Side of Bowery Between Grand Street and Delancy Street	Water shut down for the purpose of water main replacement.
08/08/18 - 08/09/18	7:00 am - 4:00 pm	South Side of West 14th Street Between 10th Ave and Washington Street	Roadway excavation for the purpose of cobblestone restoration.
08/09/18 - 08/10/18	7:00 am - 4:00 pm	East Side of Bowery Between Grand Street and Broome Street	Roadway restoration operations.
08/09/18 - 08/10/18	7:00 am - 4:00 pm	South Side of West 14th Street Between 10th Ave and Washington Street	Utilities maintenance.

WORK SCHEDULE NOTIFICATIONS: In addition to a 7:00am delivery, a prior 2:00am notification will be distributed / posted to any / all affected localities.

NO PARKING SIGNS: Will be distributed / posted 72 hours prior to the temporary occupation or street parking. Please observe posted parking regulations in construction areas.

FOR FURTHER INFORMATION: Contact Alexandre Sighe, the Community Construction Liaison at (646) 723-6925 or MED625DDC@gmail.com

Bill de Blasio
Mayor

Alex Sandoz
Acting Commissioner

www.nyc.gov/ddc

QUARTERLY
NEWSLETTERS

Reconstruction Newsletter

NYC
DDC

Department of
Design and
Construction

Third Quarter 2018

Installation of High Level Storm Sewer, Sanitary Sewer, Water Main

Brooklyn, Fresh Creek Basin Area

The NYC Department of Design and Construction (NYC DDC) is managing the High-Level Storm Sewer, Sanitary Sewer, and Water Main Replacement Phase 2B Project (SE855) in the Fresh Creek area of Brooklyn. This \$55.5M capital improvement project commenced in Fall 2017 and will take place in Community Board #16 in Brooklyn.

The scope of work includes the installation of new high level storm sewers, replacement of sanitary, storm and reinforced sewers, replacement of water mains, catch basins, manholes, hydrants and chambers. Work is permitted (by DOT-OC&C) weekdays, 7:00 a.m. to 6:00 p.m., and anticipated project completion is Fall 2020.

This project will upgrade NYC infrastructure for generations to come by increasing the capacity of combined sewer overflow to reduce flooding. The replacement of water mains will also improve the reliability of the water delivery system and help to prevent possible future water main breakages. We will also add hydrants. Project work also includes additional catch basins, curbs, sidewalks, manholes, roadway re-surfacing, as needed and tree planting. Each phase of work on this project is an important component that will ensure continued uninterrupted water supplies and better quality of life for all who live, work, and play in the community.

High Level Storm Sewers (HLSS) are one strategy for alleviating pressure on the combined sewer system and limiting CSO events. HLSS are designed to capture 80% of the rainfall, before it enters our pipes, and divert it directly into the waterways through controlled outfalls, reducing the volume of floodwater that passes through the treatment plants, and the combined sewer system. In addition, they also reduce street flooding in problematic areas. But we cannot simply install these separated assets at every site. Since they require a separate pipe and outlet to a waterbody, this strategy is only cost-effective for developments near the water's edge.

http://www.nyc.gov/html/ddc/html/aboutwatermainsewer_in_watermain_brooklyn.html

Anticipated Work Schedule: Summer 2018

about 10' x 24" Combined Sewer on E. 103rd Street from Farquhar Road to Stanley Avenue

about 10' x 24" Combined Sewer on Stanley Avenue from E. 103rd Street to Williams Ave

Continuous Installation of Storm Sewers on Glenwood Road from E. 103rd Street to E. 101st Street

about 12" x 20" Water Main on Stanley Avenue from E. 103rd Street to Williams Avenue

42" x 16" Pipe Lead Test - East 102nd Street

Work Performed to Date:

Installed 24" x 12" x 10' Combined Sewer on E. 104th Street from Glenwood Road to Farquhar Road

Installed 10' x 12" Combined Sewer on E. 103rd Street from Glenwood Road to Turnpike Ave (SWT, E. 103rd Street MTA Subway Station)

Installed 12" Combined Sewer on E. 102nd Street from Farquhar Avenue to Glenwood Road

about 10' x 18" Combined Sewer on E. 103rd Street from Glenwood Road to Farquhar Road


about 10' x 18" Combined Sewer on Glenwood Road from E. 60th Street to E. 101st Street

about 10' x 18" Combined Sewer on Glenwood Road from E. 103rd Street to E. 102nd Street

about 10' x 18" Combined Sewer on Glenwood Road from E. 102nd Street from Glenwood Road to Flushing Avenue

So far, about 90% of excavation and installation of the permanent water main and 20% combined sewer has been completed. The contractor has begun the installation of the High Level Storm Sewer work on Glenwood Road between E. 20th Street to E. 101st Street, which will continue through Fall 2018.

Project Map



Water Service Interruptions

During the course of the project there will be service interruptions. To allow water replacement, the existing water service will be shut off by placing the valves at either end of the section. Advance notice will be given for all planned interruptions. Water service will be restored at the end of the work day.

NYC de Blasio
Mayor

Lorraine Gribble
Commissioner

www.nyc.gov/ddc

12



Department of
Design and
Construction



THANK YOU

Eric Adams
Mayor

Thomas Foley
Commissioner